

## INDICE DEI MATERIALI

### LA FRASE SEMPLICE

Le carte-colore*	pag. 203
Le carte-situazione • <i>soggetto e predicato</i>	pag. 205
Le carte-situazione • <i>soggetto, predicato ed espansione diretta</i>	pag. 207
Le carte-situazione • <i>soggetto, predicato ed espansioni</i>	pag. 208

### LA FRASE COMPLESSA

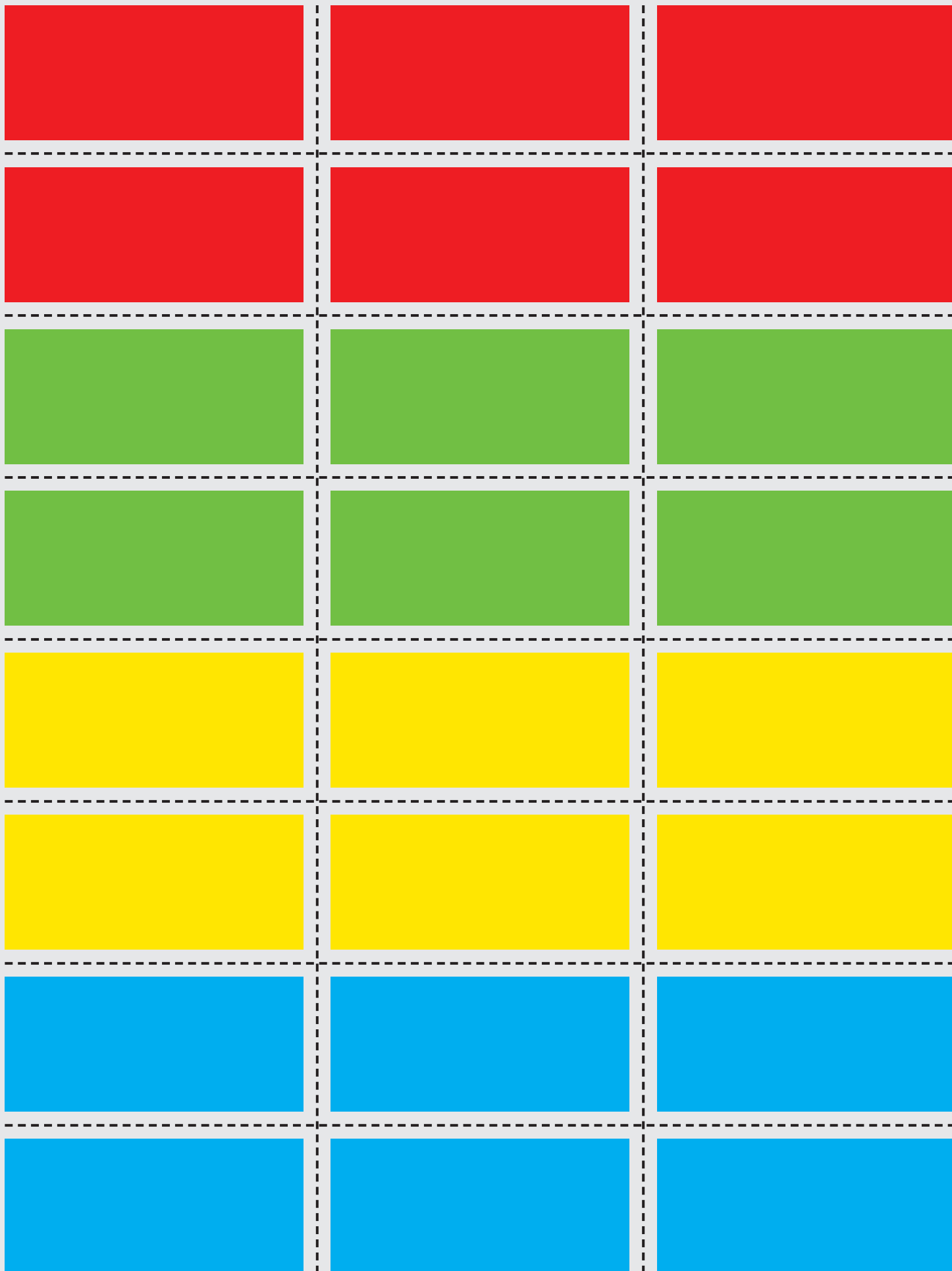
Le carte-situazione	pag. 209
Le carte dei connettivi	pag. 211

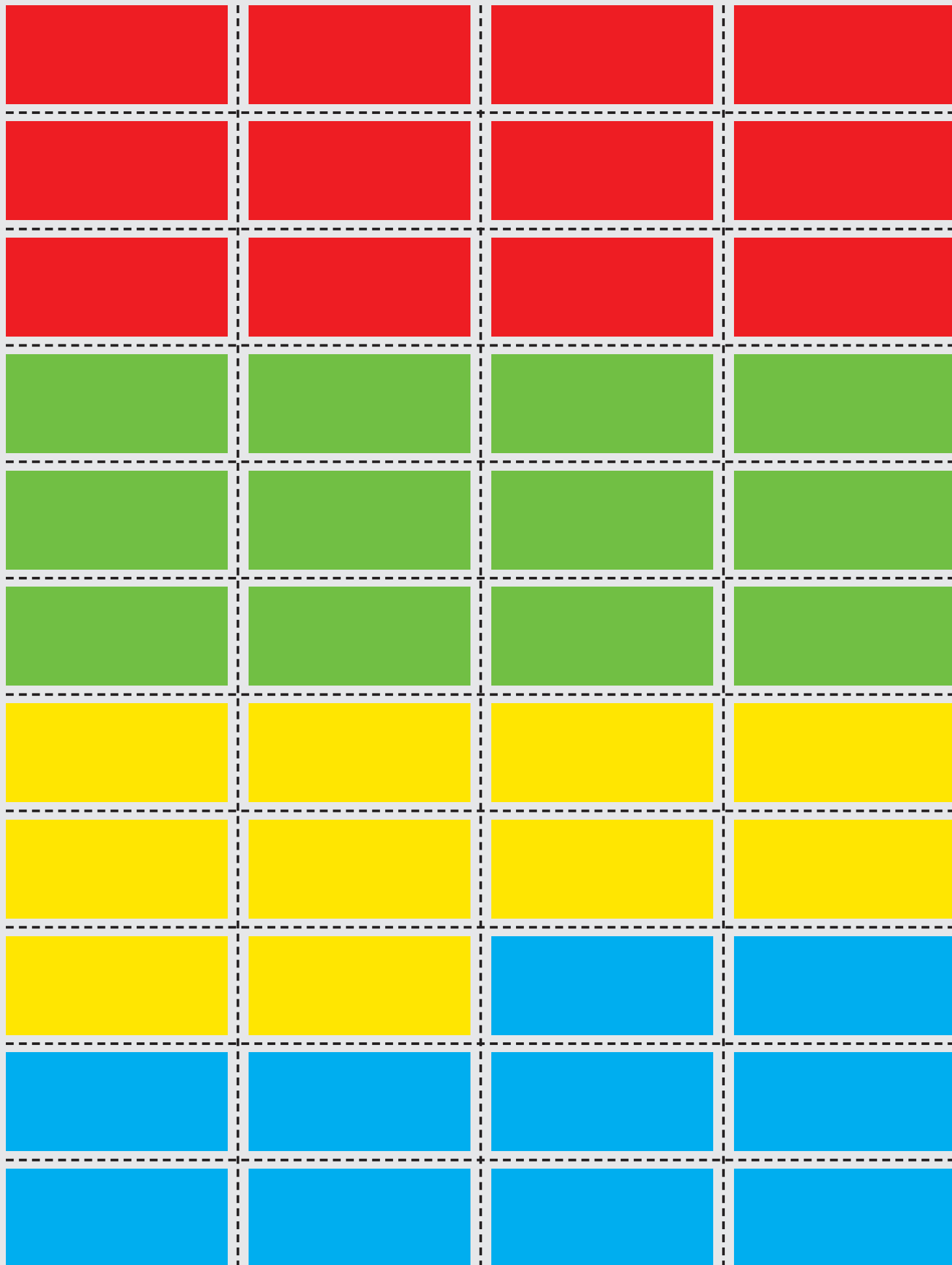
### IL LESSICO

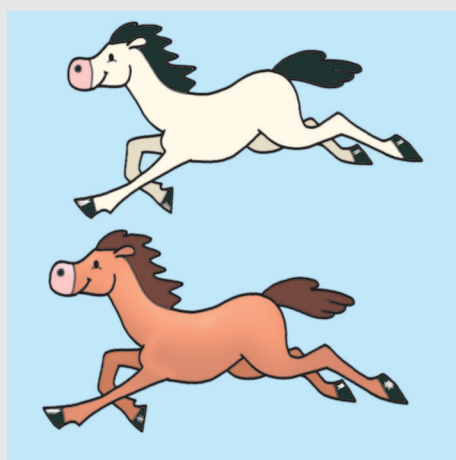
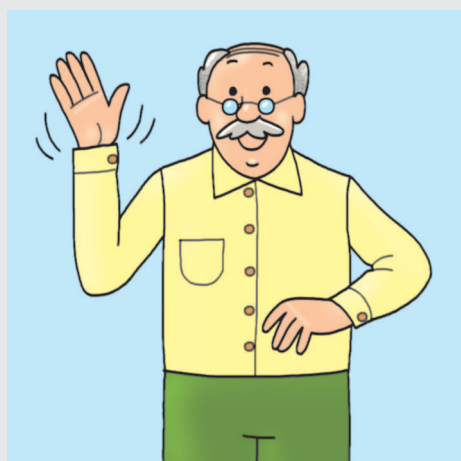
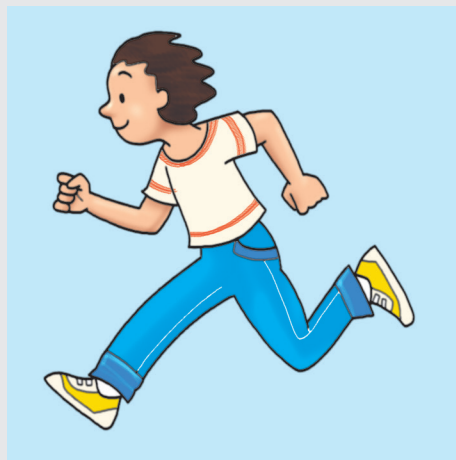
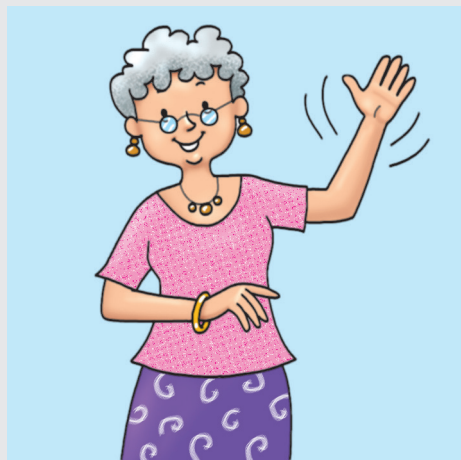
Le carte-immagine • <i>scuola</i>	pag. 212
Le carte-immagine • <i>casa</i>	pag. 213
Le carte-immagine • <i>alimenti</i>	pag. 215
Le carte-immagine • <i>indumenti e accessori</i>	pag. 217
Le carte-immagine • <i>mestieri</i>	pag. 219
Le carte-immagine • <i>edifici</i>	pag. 221
Le carte-immagine • <i>mezzi di trasporto</i>	pag. 222
Le carte-immagine • <i>sport</i>	pag. 223
Le carte-immagine • <i>animali</i>	pag. 224
Le carte-immagine • <i>vegetali</i>	pag. 226
Le carte-immagine • <i>paesaggi</i>	pag. 227
Il gioco dei contrari	pag. 229
L'acchiappa-contrari: <i>nomi, aggettivi, verbi</i>	pag. 233
L'acchiappa-sinonimi: <i>nomi, aggettivi, verbi</i>	pag. 236

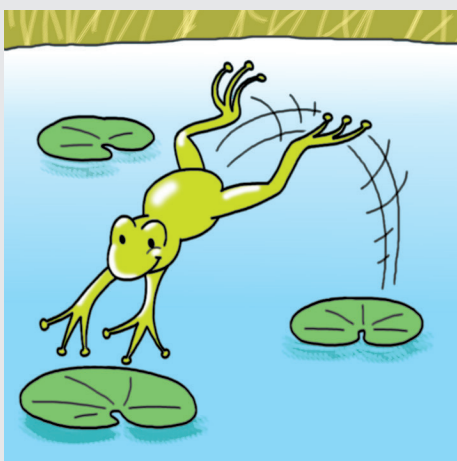
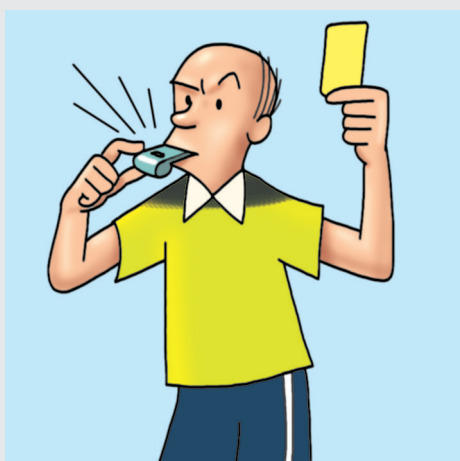
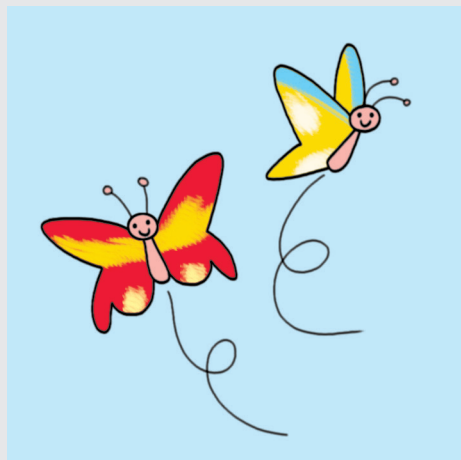
\* Le carte-colore sono fornite in due formati diversi per poter scegliere quello più adatto in rapporto alle abilità manipolative dell'alunno.

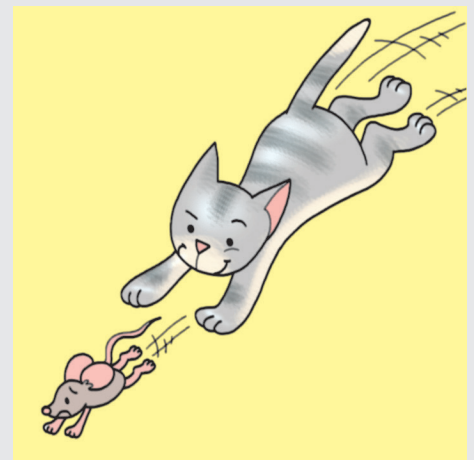
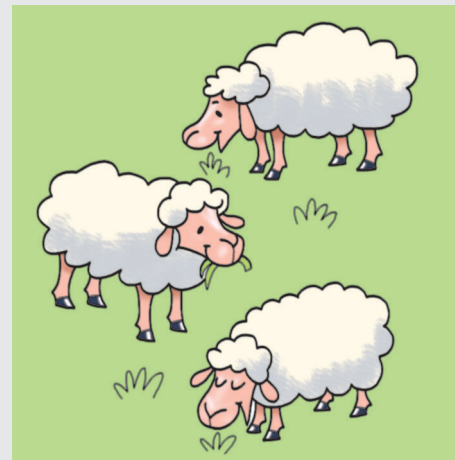
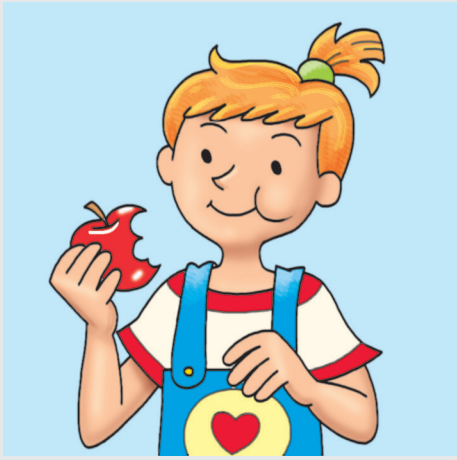
Materiali e carte sono stampabili anche dal sito [www.gaiaedizioni.it](http://www.gaiaedizioni.it) nella sezione "Materiali & Risorse", accedendo con il codice presente nel retro della copertina di questa guida.

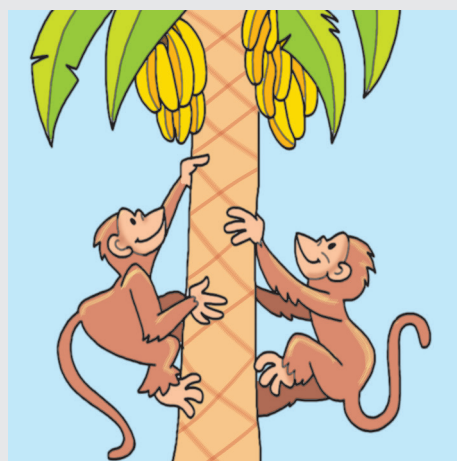














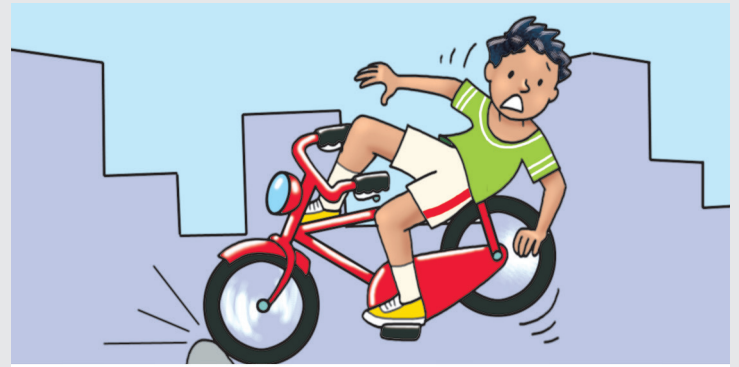
LUCIA SI LAVLA LA FACCIA



SI ASCIUGA CON CURA



IL BAMBINO PIANGE



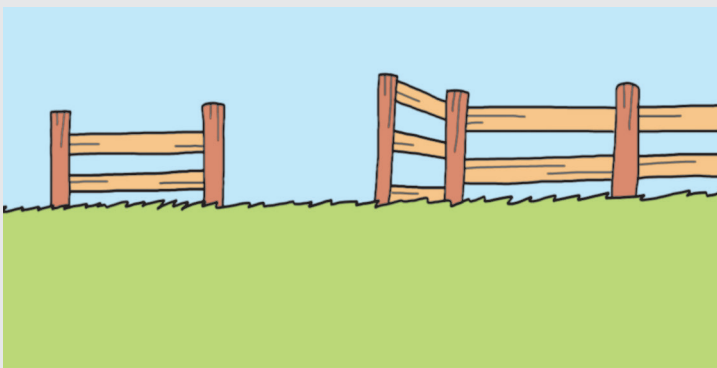
È CADUTO DALLA BICICLETTA



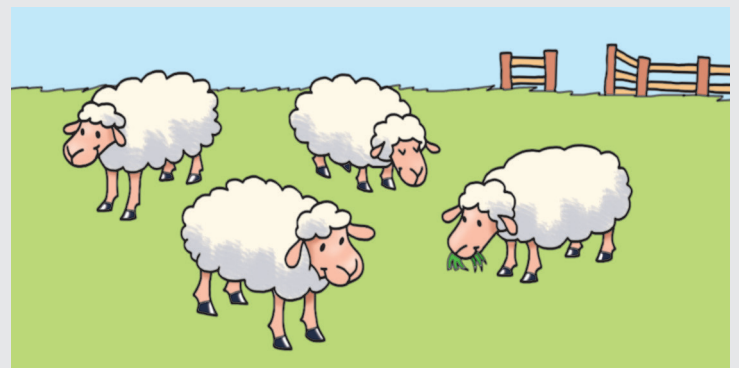
GIACOMO CUCINA



ELIO APPARECCHIA LA TAVOLA

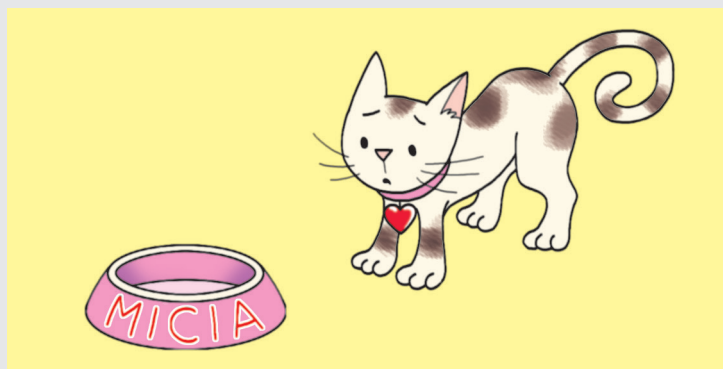


IL RECINTO ERA APERTO

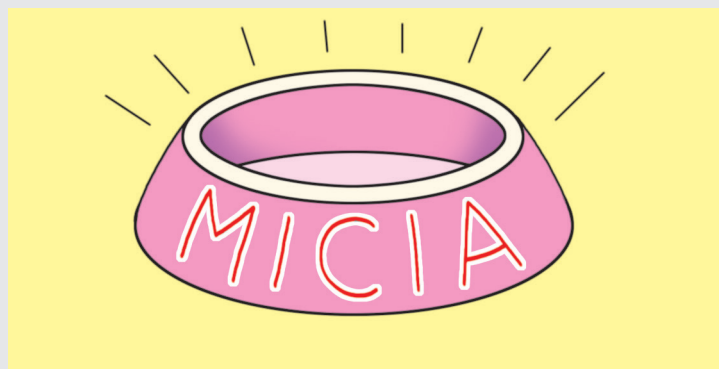


LE PECORE SONO USCITE

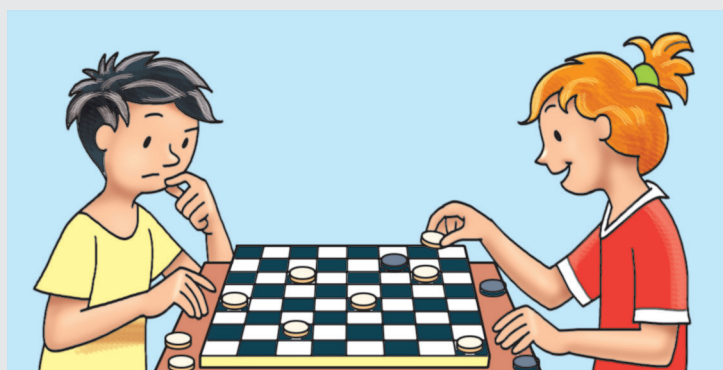




LA GATTINA HA SETE



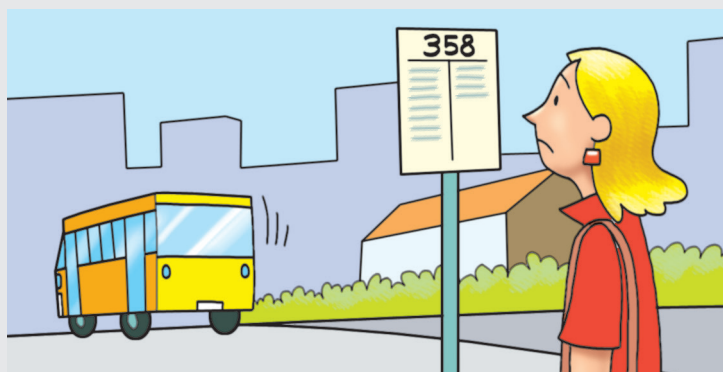
LA CIOTOLA È VUOTA



LA PARTITA DURÒ MOLTO



SARA VINSE LA PARTITA



LA MAMMA HA PERSO L'AUTOBUS



SI INCAMMINA A PIEDI A CASA



LA BALLERINA DANZA



IL PIANISTA SUONA



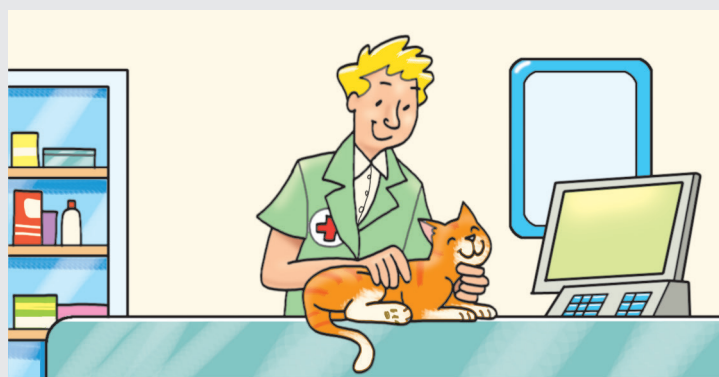
LIA ACCENDE IL TELEVISORE



SIMONA NON SI SVEGLIA



PAOLO È UN VETERINARIO



CURA GLI ANIMALI

E

ANCHE

INOLTRE

PERCHÉ

POICHÉ

DI CONSEGUENZA

QUINDI

INFATTI

INTANTO

MENTRE

ALLA FINE

INFINE

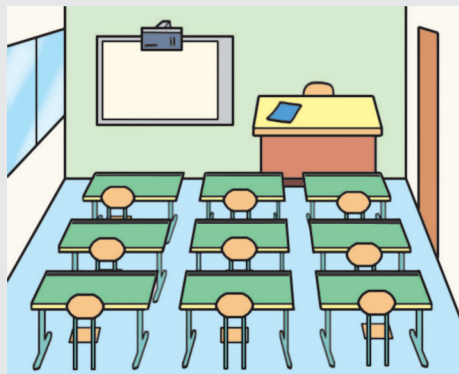
ALLORA

INVECE

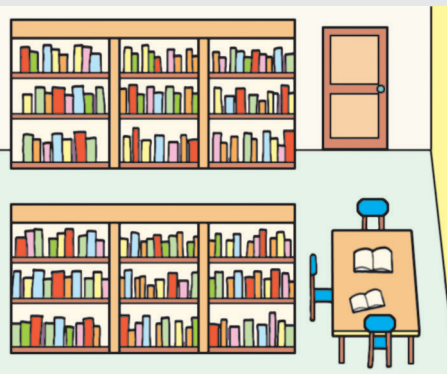
CIOÈ

MA

PERÒ



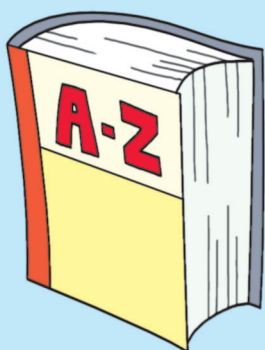
AULA



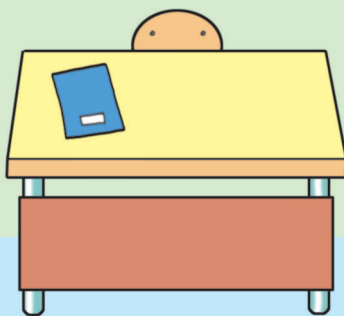
BIBLIOTECA



PALESTRA



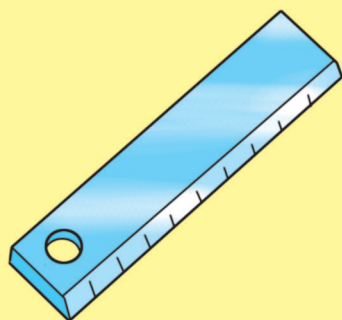
DIZIONARIO



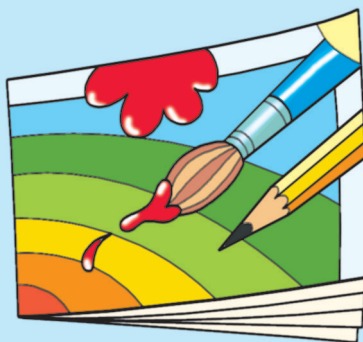
CATTEDRA



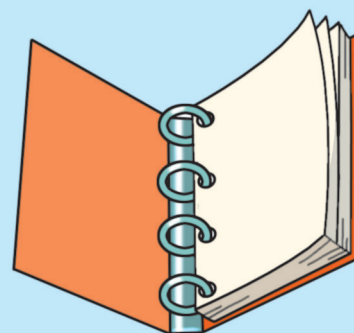
LAVAGNA



RIGHELLO



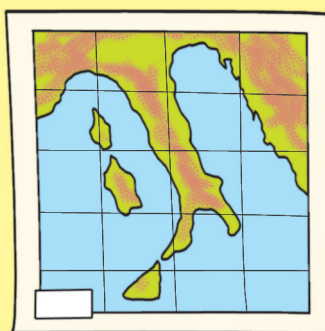
ALBUM DA DISEGNO



QUADERNO AD ANELLI



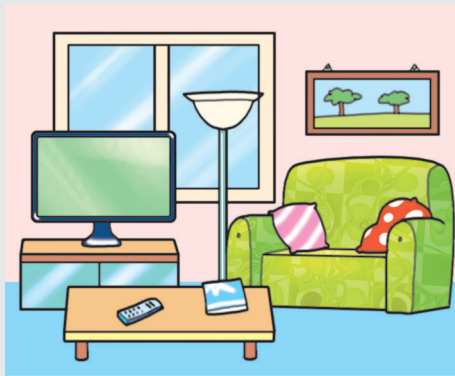
COMPUTER



CARTA GEOGRAFICA



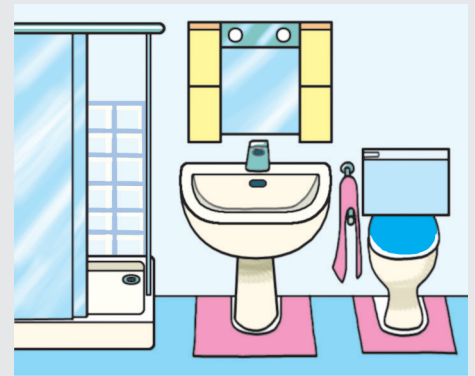
MICROSCOPIO



SALOTTO



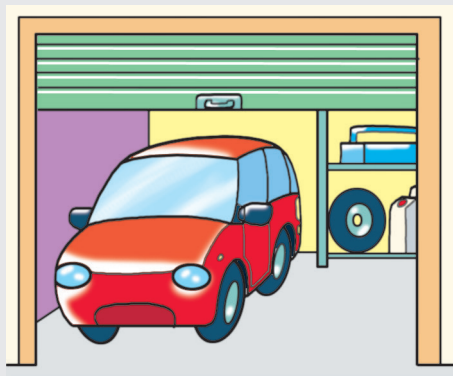
CUCINA



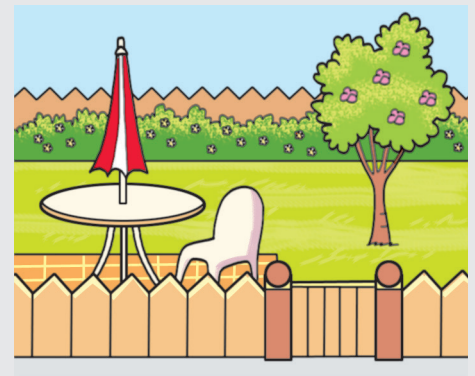
BAGNO



CAMERA DA LETTO



GARAGE



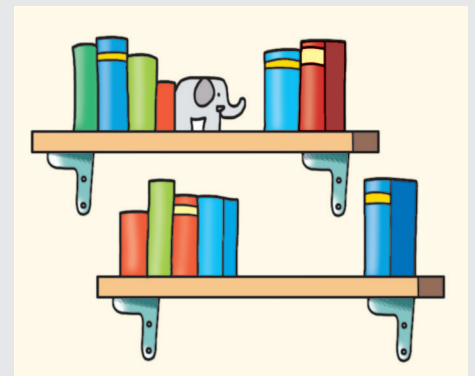
GIARDINO



LETTO A CASTELLO



LIBRERIA



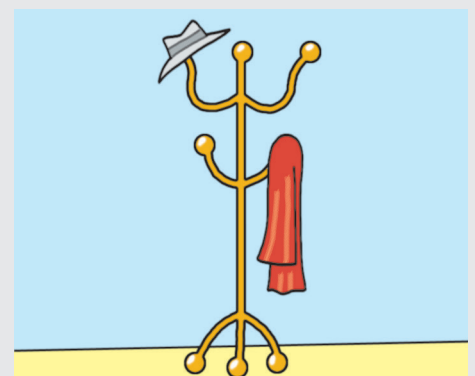
MENSOLE



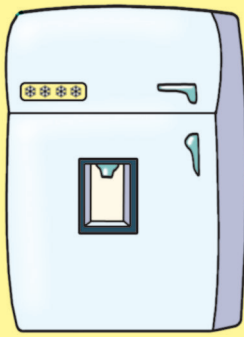
CAMINETTO



LAMPADA



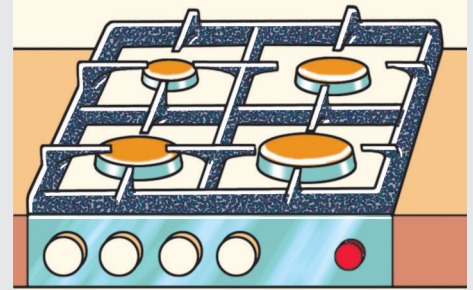
APPENDIABITI



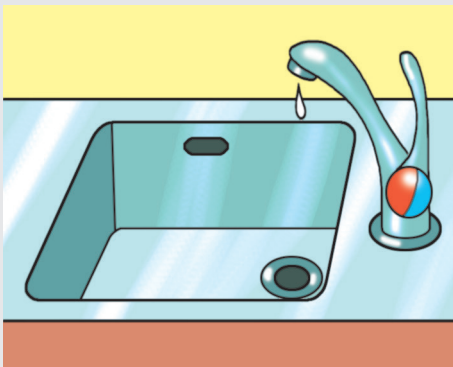
FRIGORIFERO



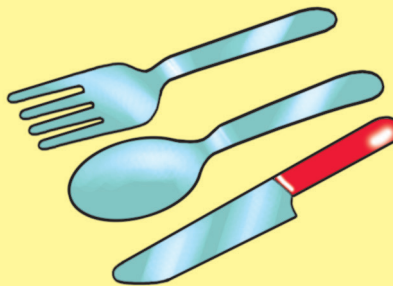
FRULLATORE



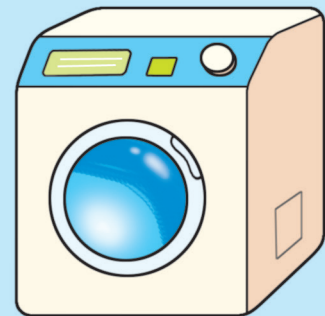
FORNELLI



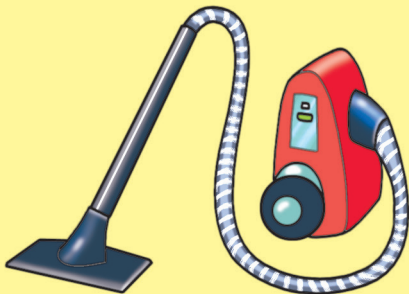
ACQUAIO



POSATE



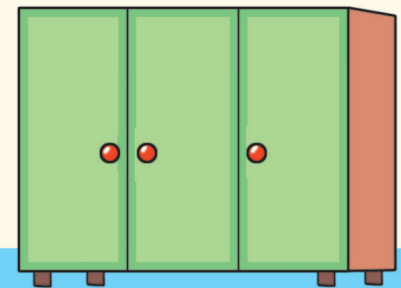
LAVATRICE



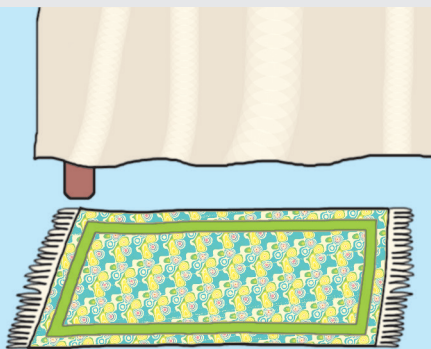
ASPIRAPOLVERE



ASCIUGACAPELLI



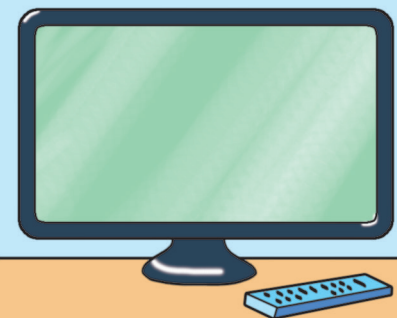
GUARDAROBA



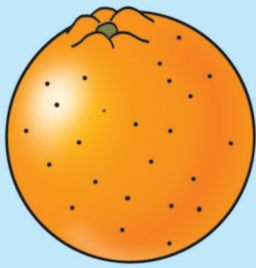
SCENDILETTO



SCRIVANIA



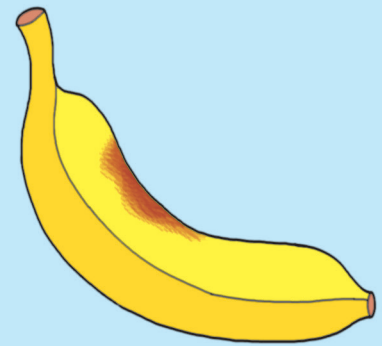
TELEVISORE



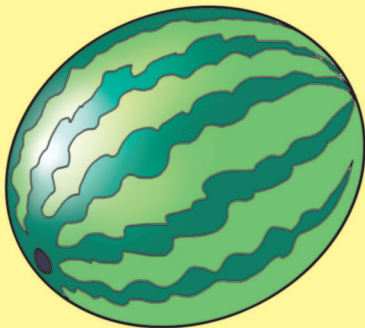
ARANCIA



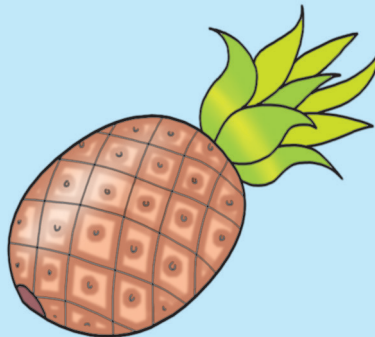
FRAGOLA



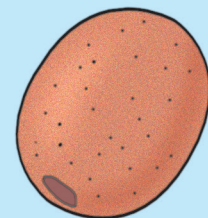
BANANA



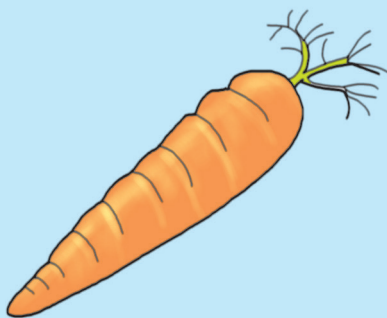
COCOMERO



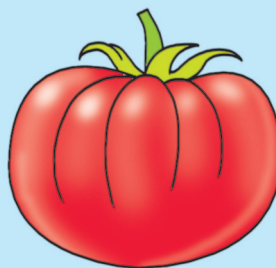
ANANAS



KIWI



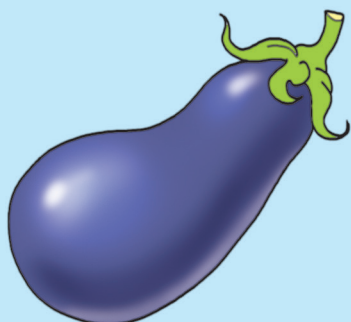
CAROTA



POMODORO



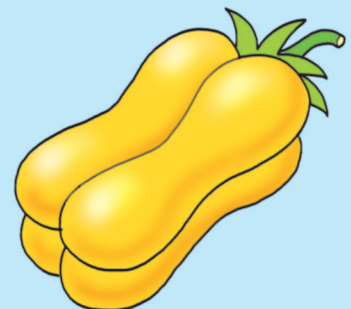
CIPOLLA



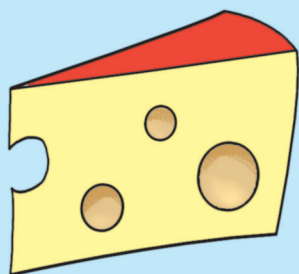
MELANZANA



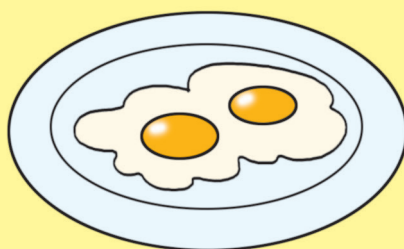
CAVOLFIORE



PEPERONE



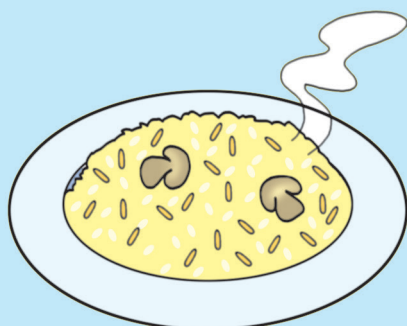
FORMAGGIO



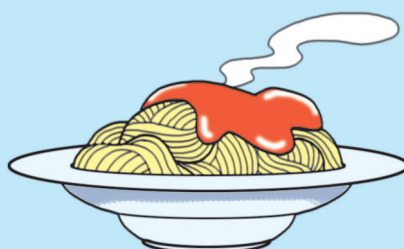
UOVA



FRITTATA



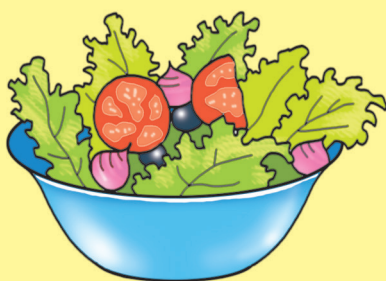
RISOTTO



PASTASCIUTTA



PESCE



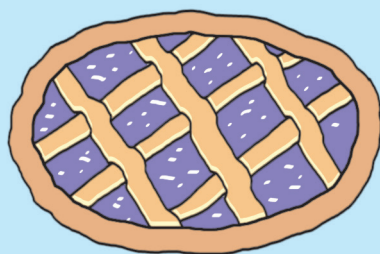
INSALATA



BIBITA



FRULLATO



CROSTATA



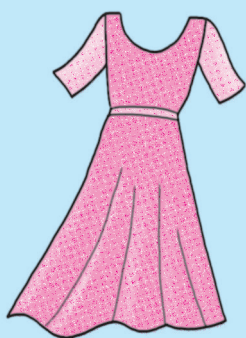
MACEDONIA



YOGURT



MAGLIONE



VESTITO



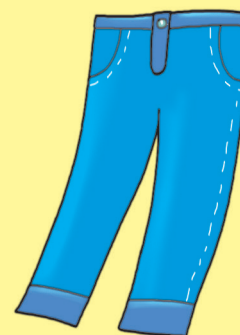
GONNA



GIACCA



CAMICIA



PANTALONI



CAPPELLO



SCARPE



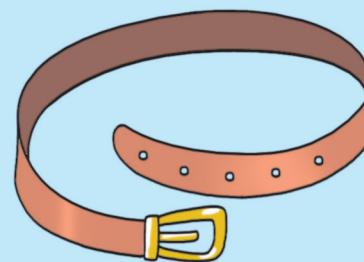
CALZINI



GUANTI



BORSA

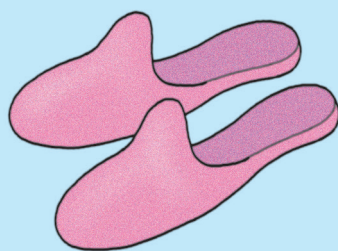


CINTURA

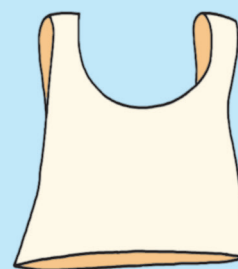




PIGIAMA



PANTOFOLE



CANOTTIERA



OCCHIALI DA SOLE



COSTUME



SANDALI



TUTA SPORTIVA



STIVALI



CRAVATTA



SCIARPA



CAPPOTTO



IMPERMEABILE



GIARDINIERE



FORNAIO



MURATORE



INSEGNANTE



CAMERIERA



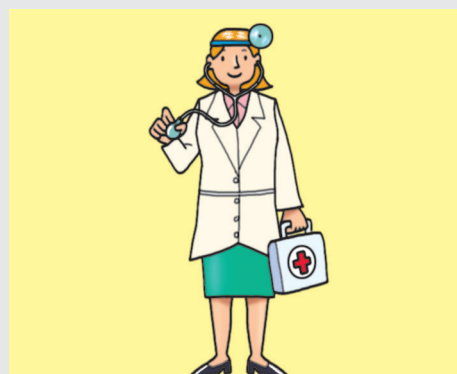
AUTISTA



VIGILE URBANO



IMBIANCHINO



MEDICO



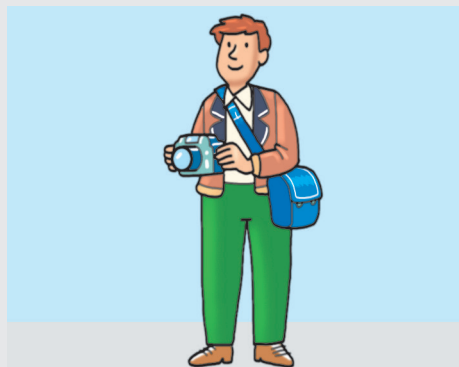
PARRUCCHIERE



SARTA



FRUTTIVENDOLO



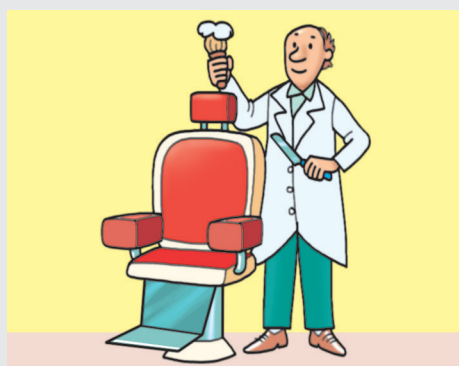
FOTOGRAFO



DENTISTA



MUSICISTA



BARBIERE



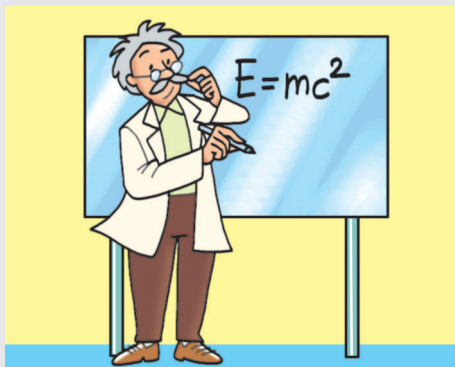
MECCANICO



GIORNALISTA



VIGILE DEL FUOCO



SCIENZIATO



INFERMIERE



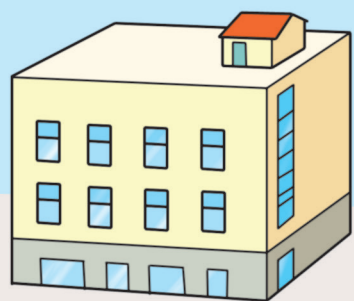
VETERINARIA



CASSIERA



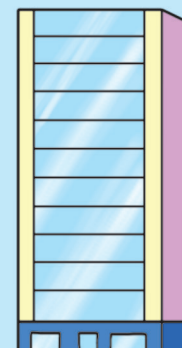
ELETTRICISTA



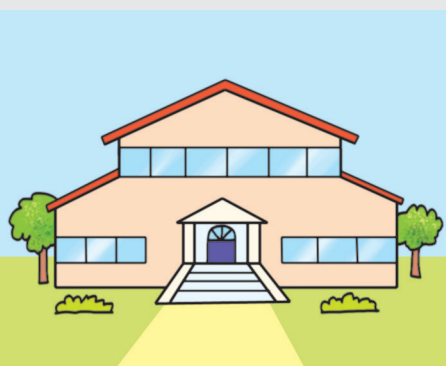
PALAZZO



VILLA



GRATTACIELO



SCUOLA



OSPEDALE



CHIESA



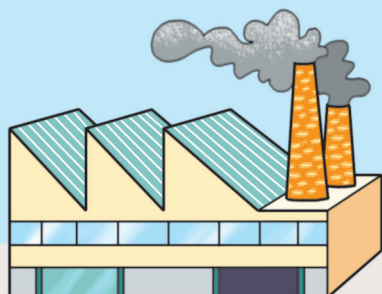
SUPERMERCATO



FATTORIA



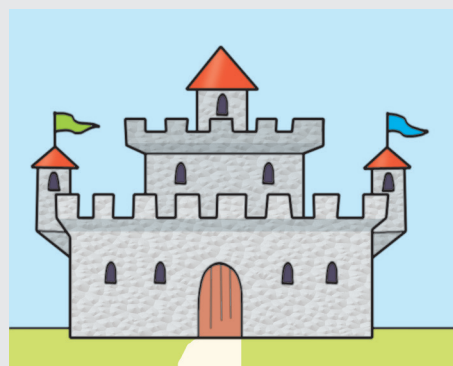
MUSEO



FABBRICA



STAZIONE



CASTELLO



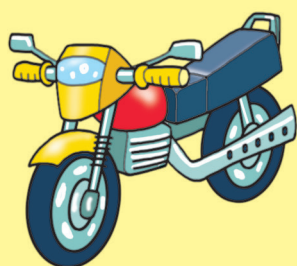
AUTOMOBILE



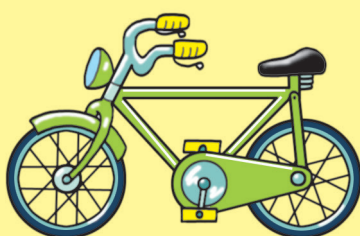
AUTOBUS



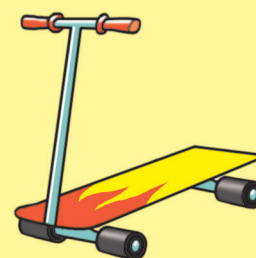
AUTOTRENO



MOTOCICLETTA



BICICLETTA



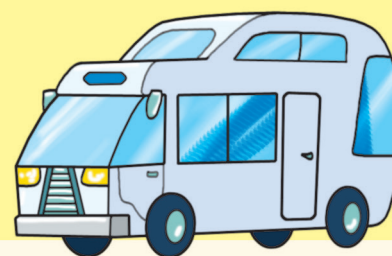
MONOPATTINO



METROPOLITANA



TRENO



CAMPER



MOTOSCAFO



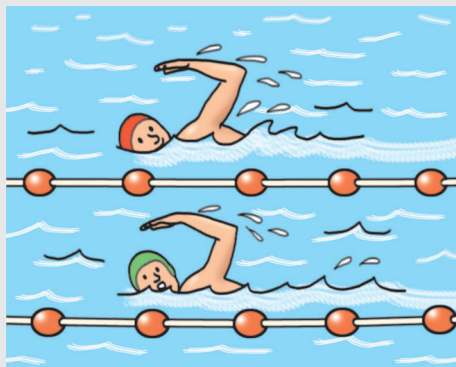
ELICOTTERO



AEROPLANO



PALLACANESTRO



NUOTO



CALCIO



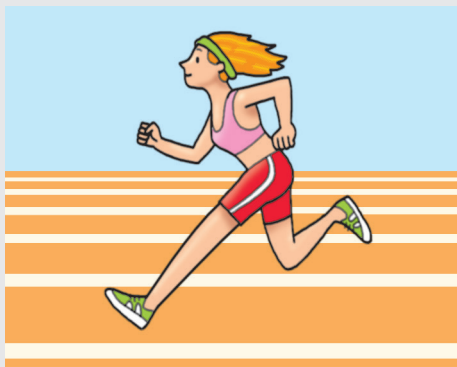
PALLAVOLO



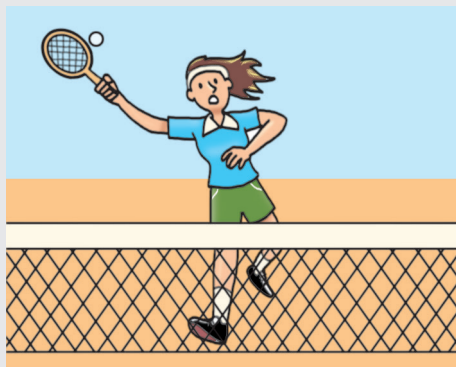
GINNASTICA



SCI



CORSA



TENNIS



CICLISMO



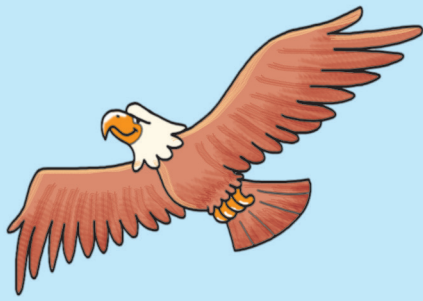
SURF



HOCKEY SU PISTA



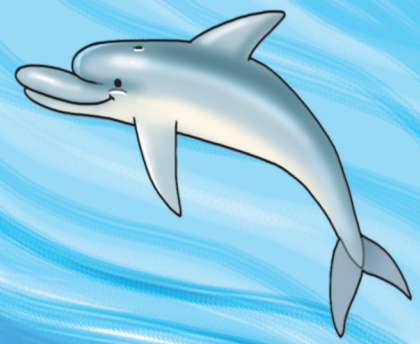
CANOTTAGGIO



AQUILA



PIPISTRELLO



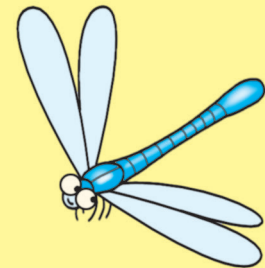
DELFINO



GORILLA



KOALA



LIBELLULA



LOMBRICO



STAMBECCO



CAMMELLO



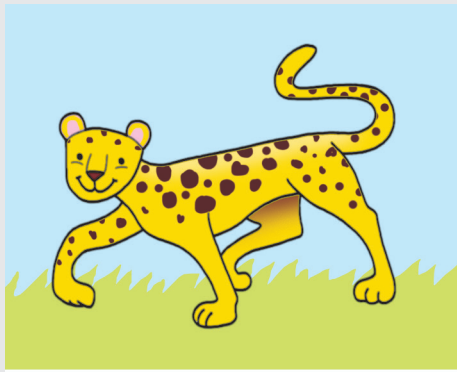
STRUZZO



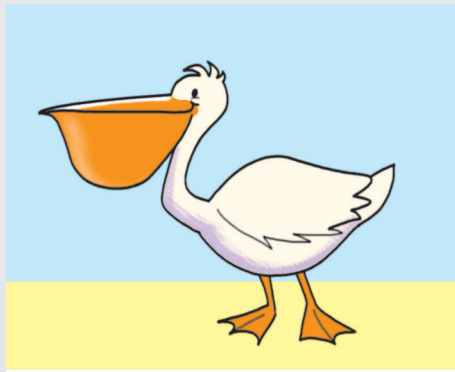
MEDUSA



TRICHECO



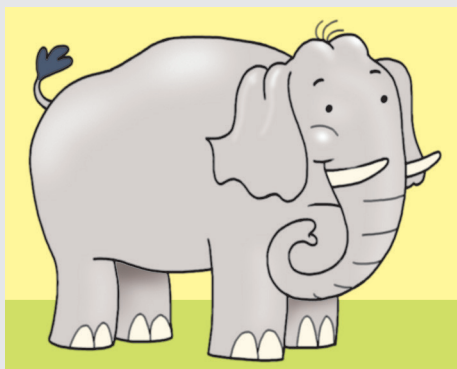
LEOPARDO



PELLICANO



MARMOTTA



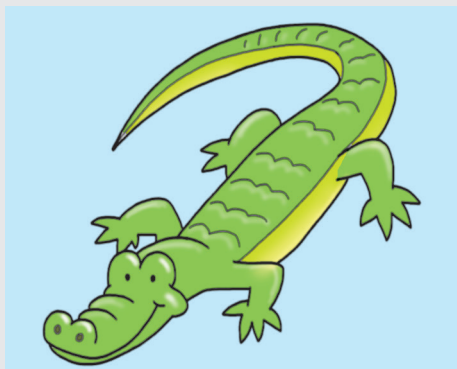
ELEFANTE



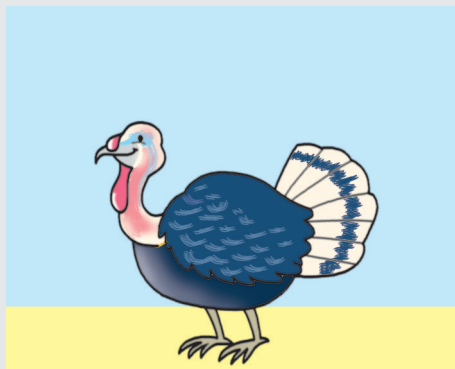
PANDA



ARAGOSTA



COCCODRILLO



TACCHINO



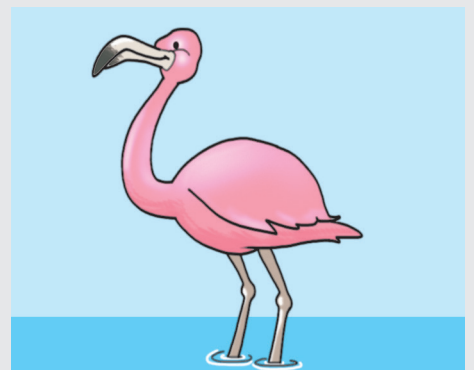
SCORPIONE



IENA



CANGURO

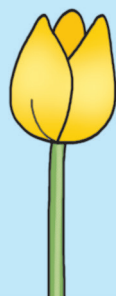


FENICOTTERO





GIRASOLE



TULIPANO



MARGHERITA



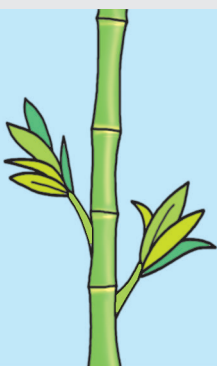
PAPAVERO



NINFEA



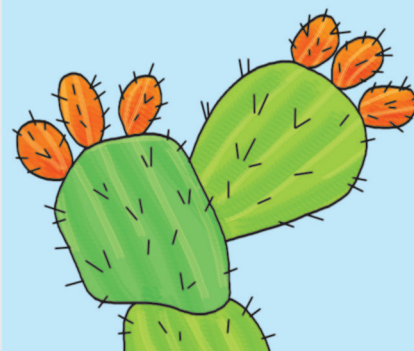
STELLA ALPINA



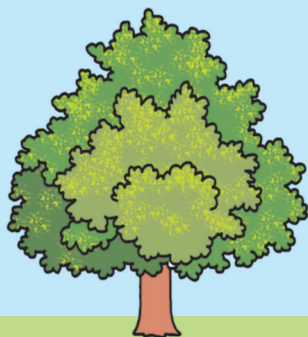
BAMBÙ



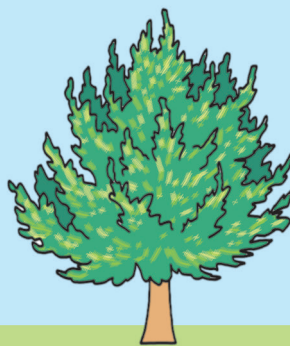
EDERA



FICO D'INDIA



CASTAGNO



PINO



PALMA



PAESE



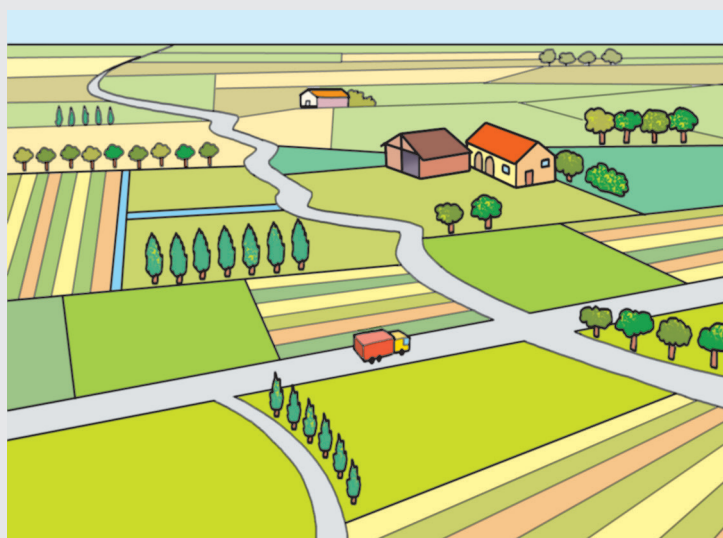
CITTÀ



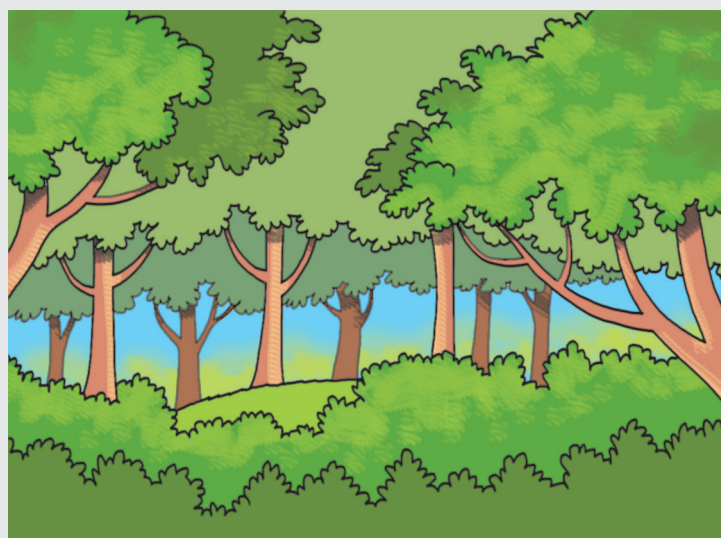
MONTAGNA



COLLINA



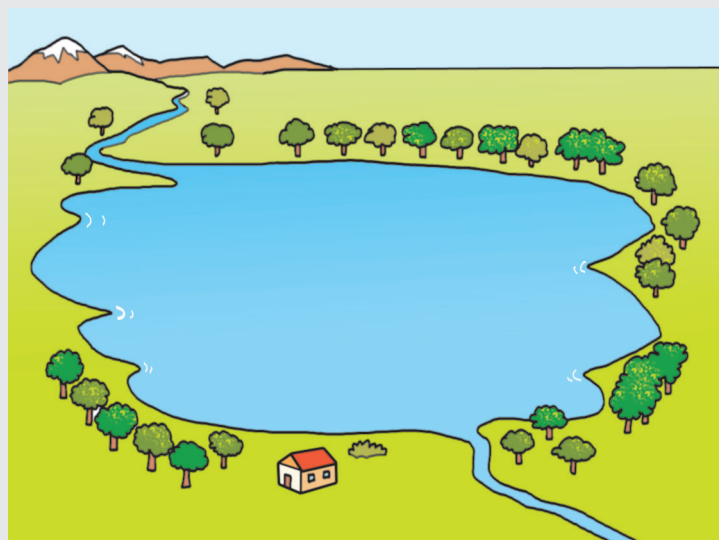
PIANURA



FORESTA



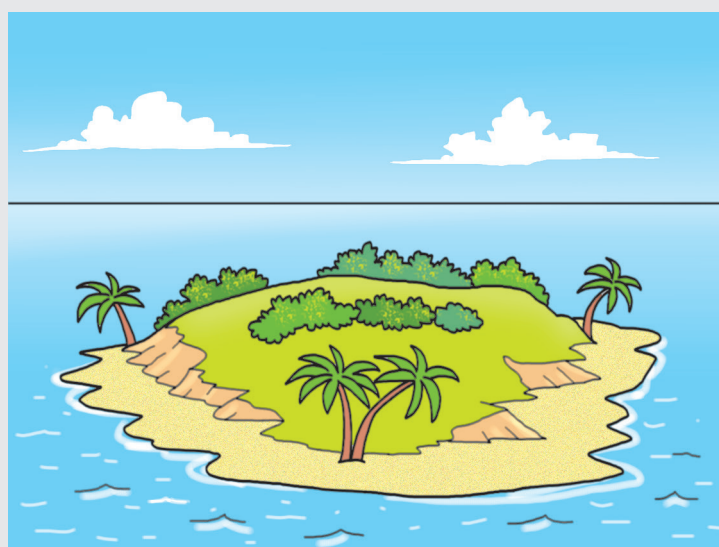
FIUME



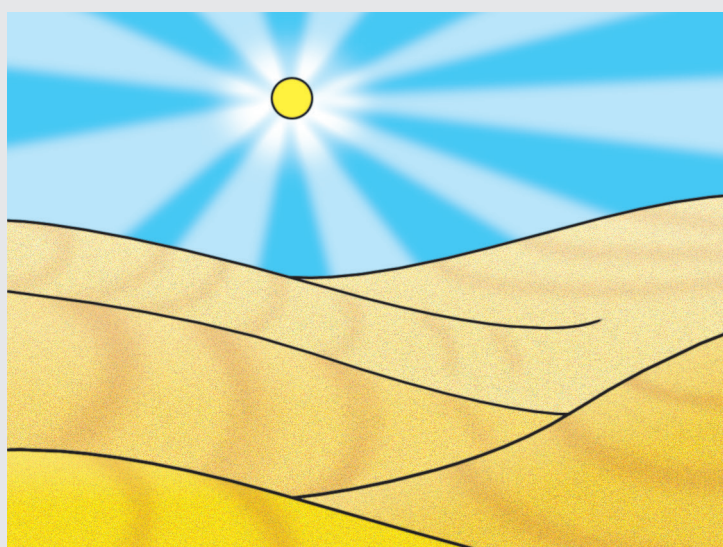
LAGO



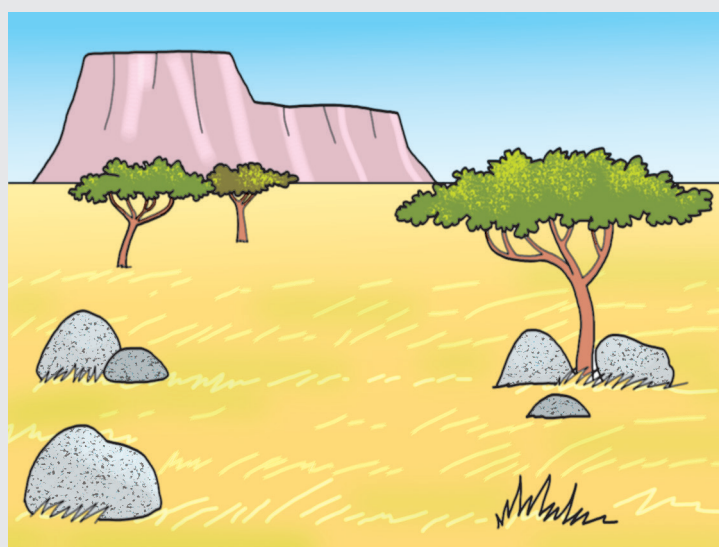
OCEANO



ISOLA



DESERTO



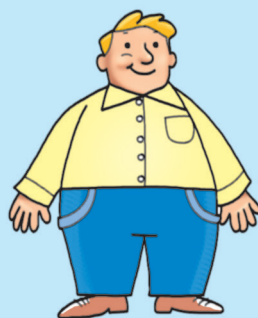
SAVANA



ALTO



BASSO



GRASSO



MAGRO



FORTE



DEBOLE



BELLA



BRUTTA



GIOVANE



ANZIANA



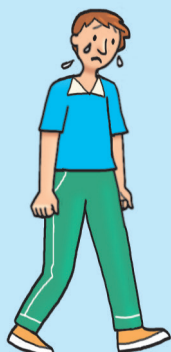
PIGRA



SPORTIVA



FELICE



TRISTE



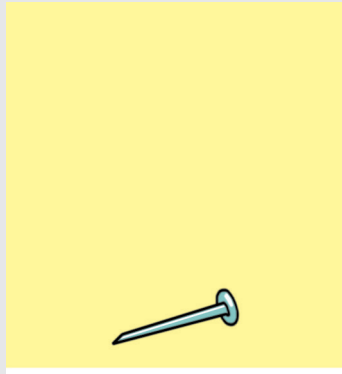
SPORCO



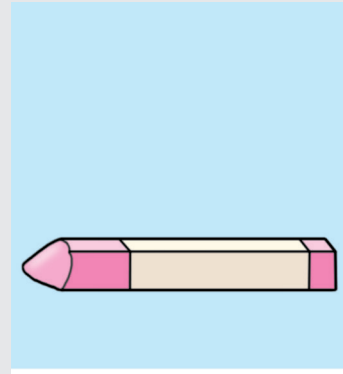
PULITO



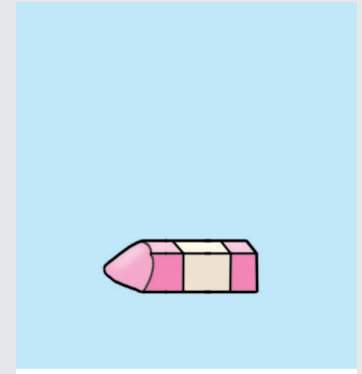
GRANDE



PICCOLO



LUNGO



CORTO



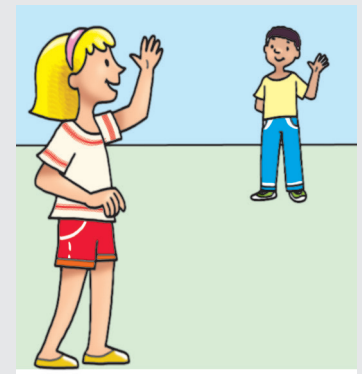
NUOVO



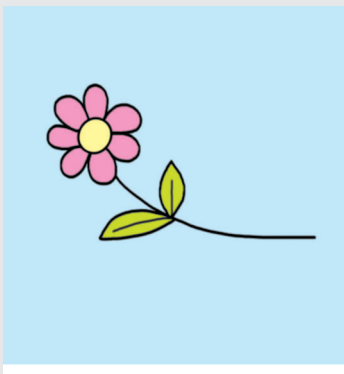
VECCHIO



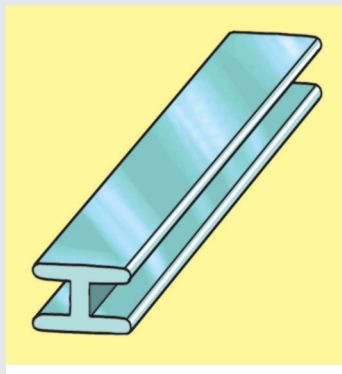
VICINO



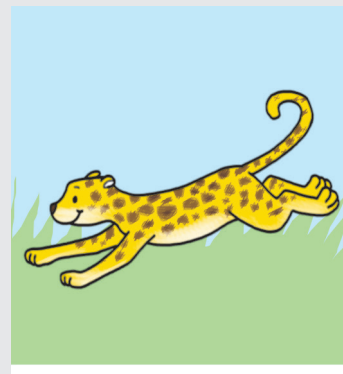
LONTANO



LEGGERO



PESANTE



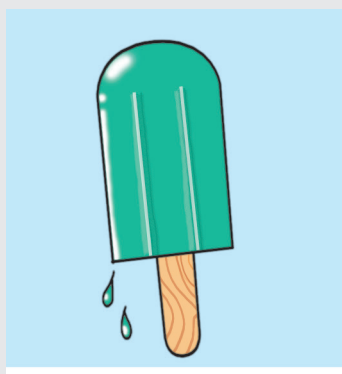
VELOCE



LENTO



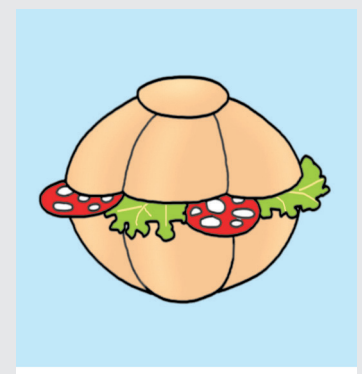
CALDO



FREDDO



DOLCE



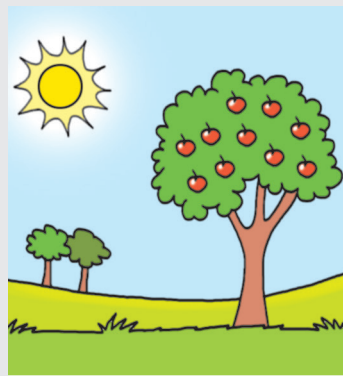
SALATO



GIORNO



NOTTE



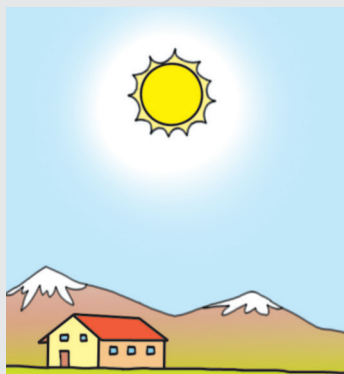
ESTATE



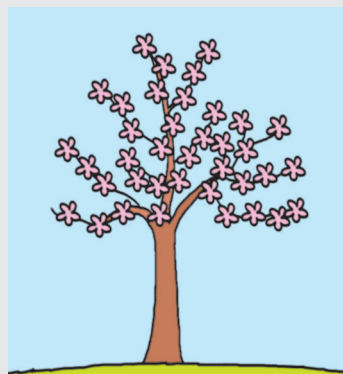
INVERNO



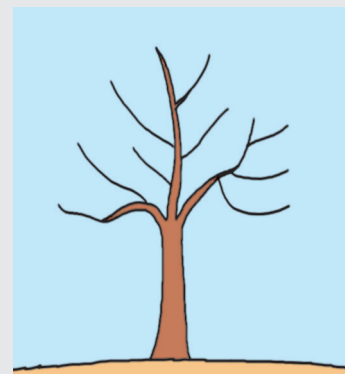
NUVOLOSO



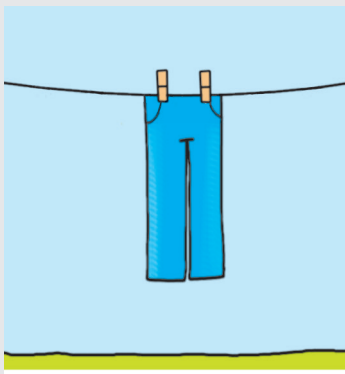
SOLEGGIATO



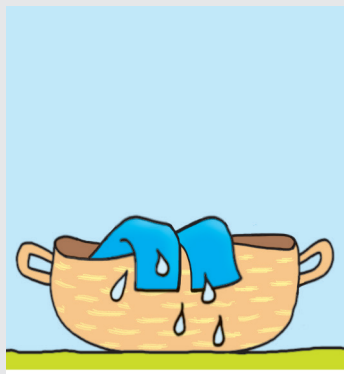
FIORITO



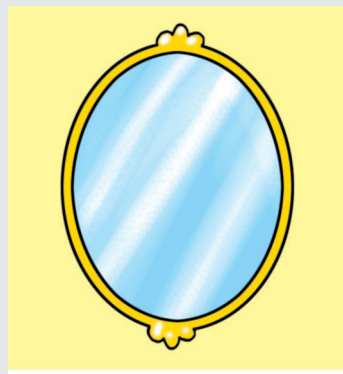
SPOGLIO



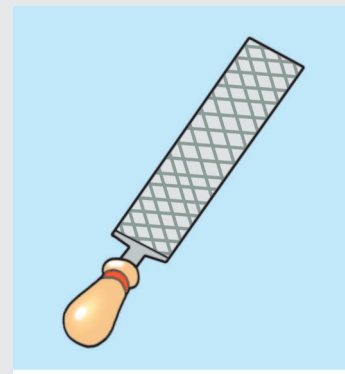
ASCIUTTO



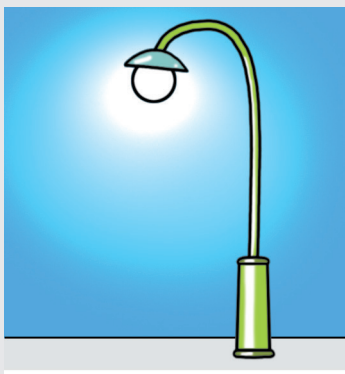
BAGNATO



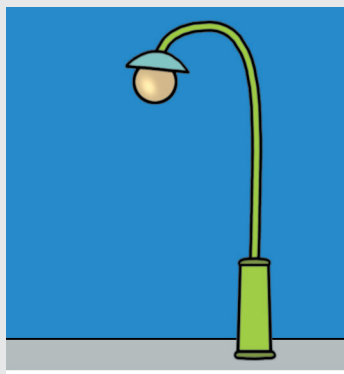
LISCIO



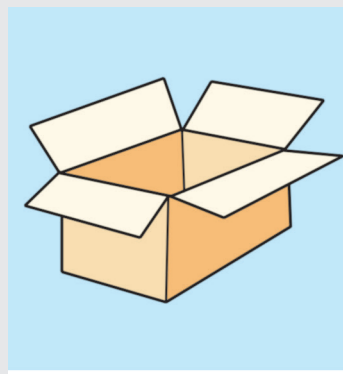
RUVIDO



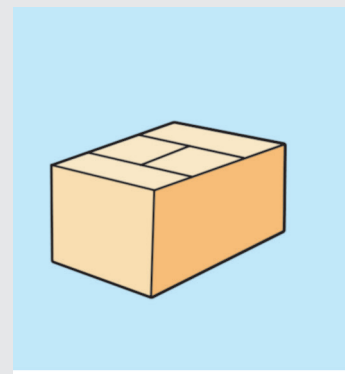
ACCESO



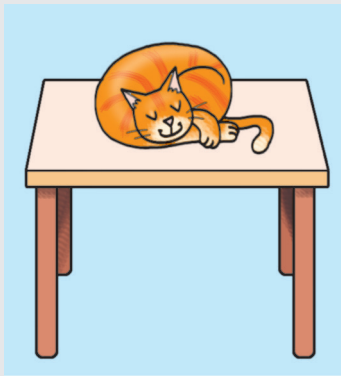
SPENTO



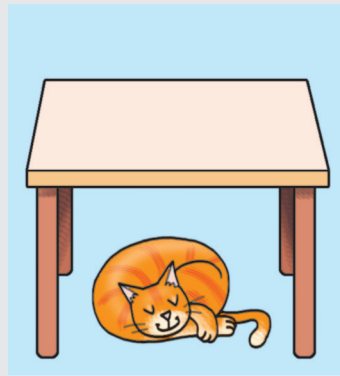
APERTO



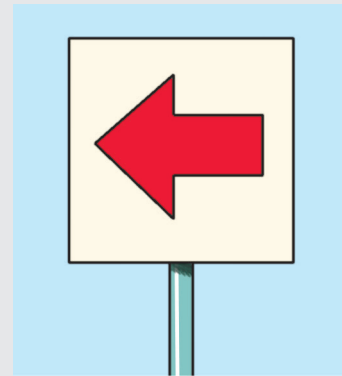
CHIUSO



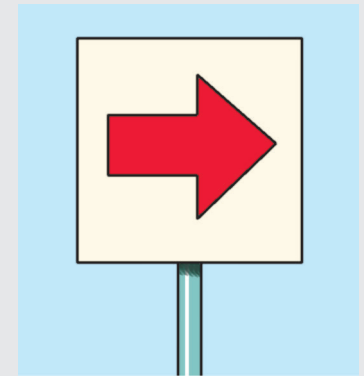
SOPRA



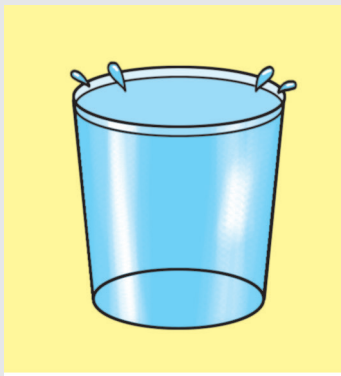
SOTTO



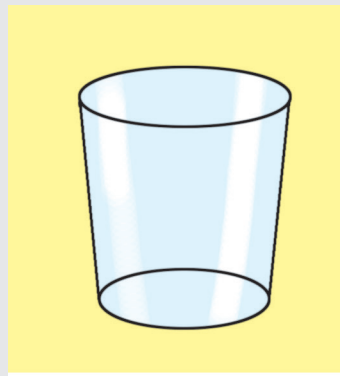
SINISTRA



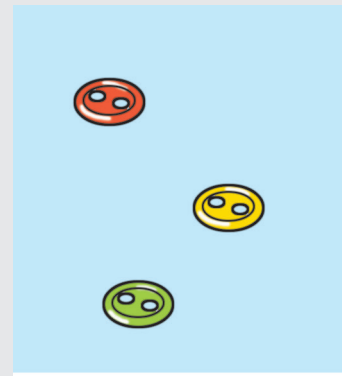
DESTRA



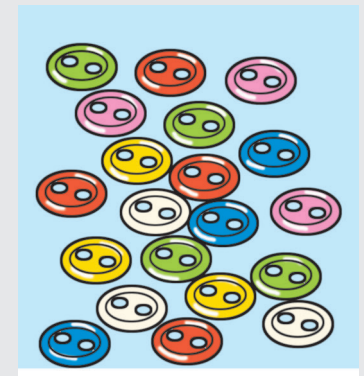
PIENO



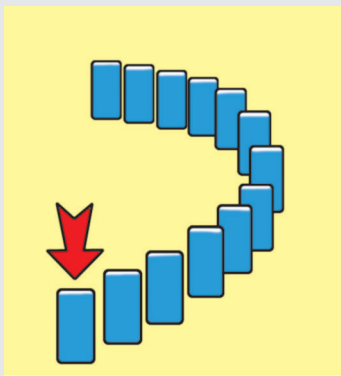
VUOTO



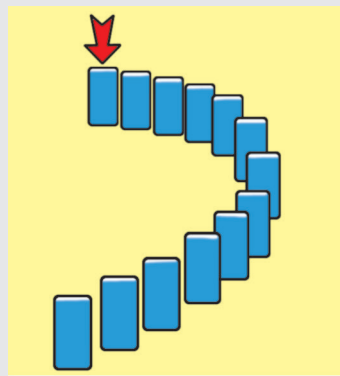
POCHI



TANTI



PRIMO



ULTIMO



SVEGLIARSI



ADDORMENTARSI



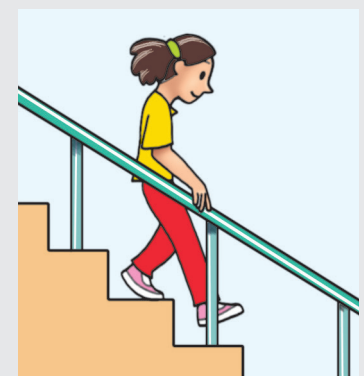
ENTRARE



USCIRE



SALIRE



SCENDERE

MASCHIO

FEMMINA

SALITA

DISCESA

FELICITÀ

TRISTEZZA

DOMANDA

RISPOSTA

SILENZIO

RUMORE

LUCE

BUIO

CORAGGIO

PAURA

PROFUMO

PUZZO

BONTÀ

CATTIVERIA

INIZIO

FINE

ORDINE

DISORDINE

SALUTE

MALATTIA

PACE

GUERRA

SIMPATIA

ANTIPATIA

VERITÀ

BUGIA

ARRIVO

PARTENZA



SBAGLIATO	GIUSTO	UTILE	INUTILE
RICCO	POVERO	SAZIO	AFFAMATO
<hr/>			
FACILE	DIFFICILE	ATTENTO	DISTRATTO
AMPIO	STRETTO	DIRITTO	STORTO
<hr/>			
COMODO	SCOMODO	COSTOSO	ECONOMICO
MATURO	ACERBO	AGILE	GOFFO
<hr/>			
UNITO	SEPARATO	GENEROSO	AVARO
MAGGIORE	MINORE	INTONATO	STONATO

PARTIRE

TORNARE

VINCERE

PERDERE

RIDERE

PIANGERE

ACCETTARE

RIFIUTARE

CHIUDERE

APRIRE

MANGIARE

DIGIUNARE

RICORDARE

SCORDARE

AMARE

ODIARE

ABBASSARE

ALZARE

ENTRARE

USCIRE

AVVITARE

SVITARE

AGGIUNGERE

TOGLIERE

ACCENDERE

SPEGNERE

COSTRUIRE

DEMOLIRE

RIEMPIRE

SVUOTARE

OFFRIRE

RICEVERE

STRADA

VIA

PAURA

SPAVENTO

TRISTEZZA

INFELICITÀ

MAESTRO

INSEGNANTE

FELICITÀ

ALLEGRIA

DONNA

FEMMINA

VITTORIA

TRIONFO

MONTE

VETTA

UOMO

MASCHIO

ANIMALE

BESTIA

ABITO

VESTITO

ALIMENTO

CIBO

ALUNNO

STUDENTE

BIBITA

BEVANDA

PIANTA

VEGETALE

PERDITA

SCONFITTA

CORTO

BREVE

FORZUTO

POTENTE

FAMOSO

CELEBRE

BRILLANTE

LUMINOSO

CARINO

GRAZIOSO

CRUDELE

FEROCE

RAPIDO

VELOCE

SPORCO

SUDICIO

FACILE

SEMPLICE

MORBIDO

SOFFICE

ABILE

BRAVO

ORRIBILE

ORRENDO

CALMO

QUIETO

SINCERO

ONESTO

SGARBATO

SCORTESE

VECCHIO

ANTICO

PARLARE

DIRE

LEVARE

TOGLIERE

REGALARE

DONARE

GUARDARE

OSSERVARE

BALLARE

DANZARE

VESTIRE

INDOSSARE

SPEDIRE

INVIARE

FINIRE

TERMINARE

PULIRE

LAVARE

URLARE

GRIDARE

ACQUISTARE

COMPRARE

COLORARE

DIPINGERE

SENTIRE

UDIRE

GELARE

GHIACCIARE

BUTTARE

GETTARE

SALTARE

BALZARE